



FACT FILE

THE BRIEF

To reimagine a suburban semi as a contemporary beach house with a relaxed, holiday atmosphere

THE ARCHITECT

Shaun Carter

A The modest front entrance holds no hint of the extent of the changes to the back of the semi **B** Sliding doors open on to the deck at the rear which unifies the space **C** Calcutta marble makes a bold statement in the kitchen **D** The airy dining room adjoins the deck

It's out of the blue

A dowdy Bondi dwelling has a reincarnation befitting its ocean location, writes **Ben Pike**

Located just a short stroll from Bondi Beach, the old version of this newly renovated property was something of a fish out of water. The then single-level building was tired, boxy and insular, looking out of place near one of the country's most iconic slices of coastline. So the team at carterwilliamson architects were asked to create a double-

level property that embraced its surroundings through new materials, colours and textures. The result is a fluid and light-filled family home, which enjoys an indoor-outdoor feel through the clever use of glass and low-maintenance materials.

Nuts and bolts

The clients needed more living and sleeping space, an expansive deck area and a studio out the back to get creative juices flowing. The front sunroom and first two bedrooms were preserved, while everything else was destined for the sledgehammer. Two common walls in different parts of the property had to stay – one between the semis and the other between the garages. The garage was converted into a studio and carterwilliamson principal Shaun Carter says that as the studio and the home got close together during the design stage, they wanted to create a family-like resemblance between them. “Rather than aligning the columns that hold up the corners, we separated them,” he says. “We cut back the angle of the studio so there’s a tension between the two. “We allowed them to get close enough to create that tension. But when you pull the aluminium sliding doors out – which you can do on both buildings – that’s where the idea of the unifying deck comes into play. “What we saw was one big outdoor deck that housed the studio, the house, the backyard and the side yard. Once you open the doors that understanding is quite clear.

“At the same level you can walk on those surfaces between the outdoor room and the main deck, the studio, the house and the side space.”

Big ribbon

Perhaps the most impressive part of this renovation is the ribbon of blue-tinted glass that runs through the middle of the home from top to bottom. Indeed, the innovation won carterwilliamson the 2012 Viridian Glass Residential Creative Interior Glass Application Award. Shaun says the void encased by the glass performs more than the obvious function of drawing light into the home. “We like to use voids as a device to bring some form of spatial excitement and differentiation into the building,” he says. “In the lower-level space you are aware of the differences between the living spaces and kitchen/dining spaces. And upstairs it provides a separation between the bedrooms. “It has the added benefit of bringing light deep into the plan. The void illuminates the middle. In that void slot, we lined it with blue colourback glass. “There’s the big blue of the Pacific Ocean at Bondi and the big blue of the sky. We wanted to play that up in the void and, given it is a slot on a big square space, there was a certain tension between two walls.”

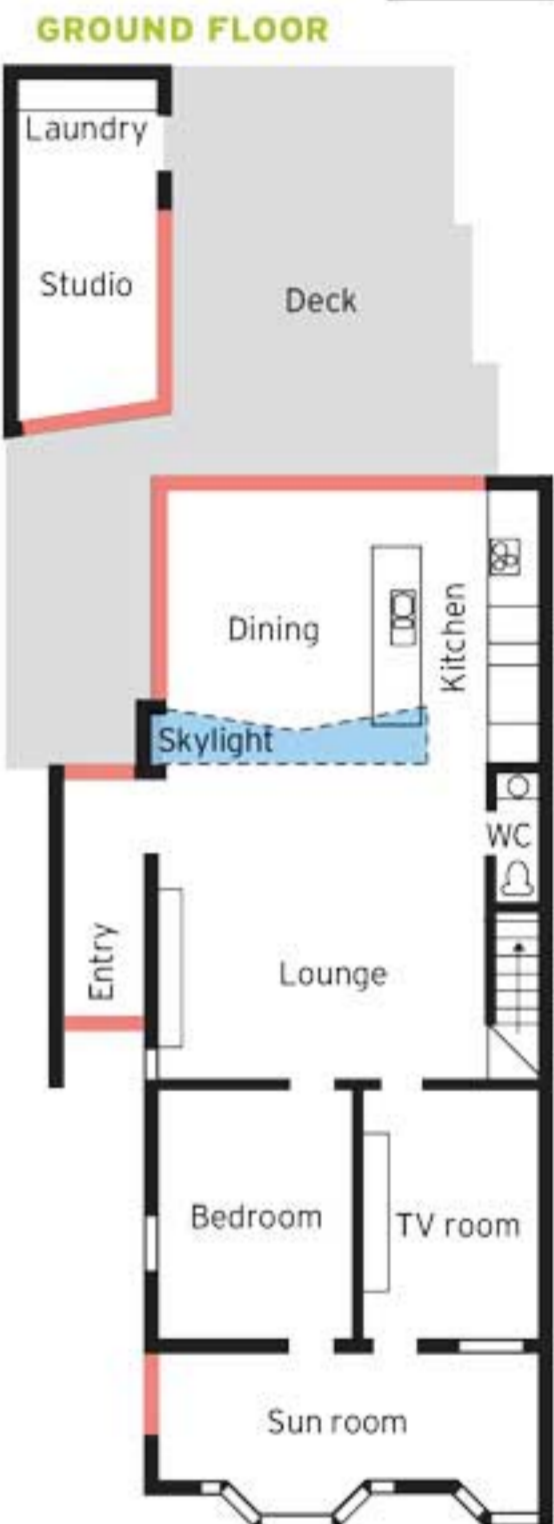
Material gains

Just as India was considered the jewel in the crown of the British Empire, so the Calcutta marble is the centrepiece of the





E The lounge room with staircase **F** The studio has been located on its own out on the deck **G** An upstairs bedroom enjoys rooftop views **H** Blue-tinted glass makes the central void a practical as well as aesthetic feature **I** Louvres provide both cross ventilation and light



living/kitchen area. Shaun knew the clients loved not only food but also the ritual of cooking, and so the marble suited. "The use of marble as a material celebrates the clients' love of cooking," he says. "The island bench looks like it has been hewn out of a slab of Calcutta marble. "We carried that theme through with other horizontal surfaces. "If you look at the TV stand, the island bench and the wall bench (splashback), they all have the Calcutta surfaces." On the facade, Shaun opted for handmade glass mosaics as an alternative to other facades so it would resemble light shimmering off the surface of the ocean.

White is also a beach-house colour. "There is a lot of salt spray and sand from time to time and we wanted a facade that could be low-maintenance," he says. "We don't want our clients having to come home and paint everything or reapply something. All our bathrooms are fully tiled. They are fantastic because they are wet areas and all you do is hose them down and they are clean. So, we did the same thing outside." pikab@dailyleague.com.au

MORE INFORMATION carterwilliamson.com



I "The use of marble as a material celebrates the clients' love of cooking"



Cannon® country flame urban lifestyle

Share a lifetime of cosy moments with Cannon Gas Log Heaters.

Providing you with rapid warmth and the romance of a real log fire without the mess, a Cannon Gas Log Heater is simple to operate and energy efficient. Start your lifetime of cosy moments this Winter with a Cannon Gas Log Heater.

Cannon®
Gas Log Heaters



Call 1300 727 421 or visit www.cannonheaters.com.au